

#whdentalwerk
f @ in ▶
video.wh.com

Now at
your dealer
or **wh.com**



Proxeo Aura

Instructions for preparing treatment

a) BEFORE TREATMENT

1 Select a suitable spray head for the intended treatment

2 Shake the powder bottle well before use

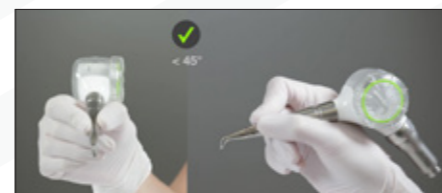
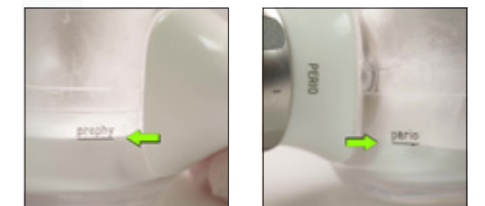
3 Do not exceed the maximum powder capacity

1. SOFT+, SMOOTH > Prophy
2. SENSITIVE+ Glycine Powder > Perio
3. Avoid overfilling the powder container

4 Select the correct setting with the adjustment ring

1. SOFT+, SMOOTH > Prophy
2. SENSITIVE+ Glycine Powder > Perio

5 Do not tilt the Proxeo Aura air polishing handpiece more than 45° during use, either lengthwise or crosswise. The spray head can be rotated by 360° to direct the jet.



Proxeo Aura

Instructions for maintenance and cleaning

b) AFTER TREATMENT*

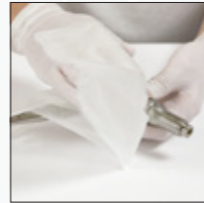
1

Remove the Perio tip, when has been used



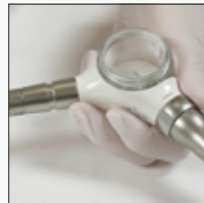
2

Disinfect the spray head, handpiece, quick coupling etc. by wiping



3

Open the powder container



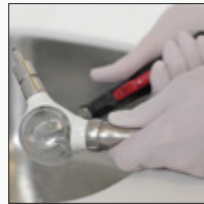
4

Dispose of the remaining powder according to local regulations



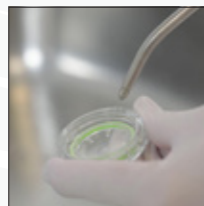
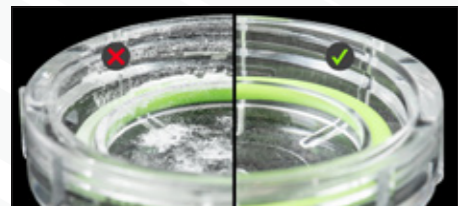
5

Clean the powder container, cap and handpiece connector cavity with compressed air



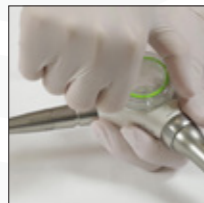
6

Use the interdental brush to clean the holes on the diffuser in the powder container



7

Close the powder container



8

Rinse the system for 8 to 10 seconds using only air and water (no powder), hold the powder jet into the suction

9

Disconnect the handpiece from the quick coupling



10

Dry the quick coupling with compressed air



11

Remove the spray head



12

Use compressed air to dry the channels on the front and rear side of the spray head



13

Hygiene treatment of the spray head

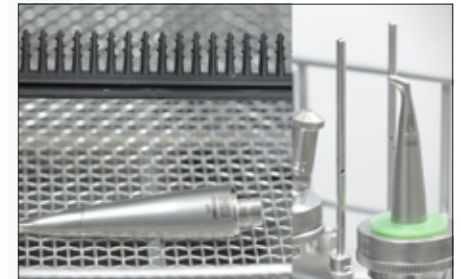
1. Reprocessing of the spray head in a thermal disinfectant

- › If possible, use a suitable adaptor
- › Accessories Teon/Teon+

a. Standard adaptor A803 (for spray head, standard length 120°, 90°, Perio)

b. Auxiliary adaptor A801 + AUF1 + ADS silicone (white) (for spray attachment, short 120°, 90°, Perio)

2. Processing of the spray head in the sterilizer



14

Use compressed air to thoroughly dry all the spray head parts, both internally (channels) and externally



15

If necessary, again clean the powder container, cap and handpiece connector cavity with compressed air



* Note: For detailed instructions please refer to the instructions for use.